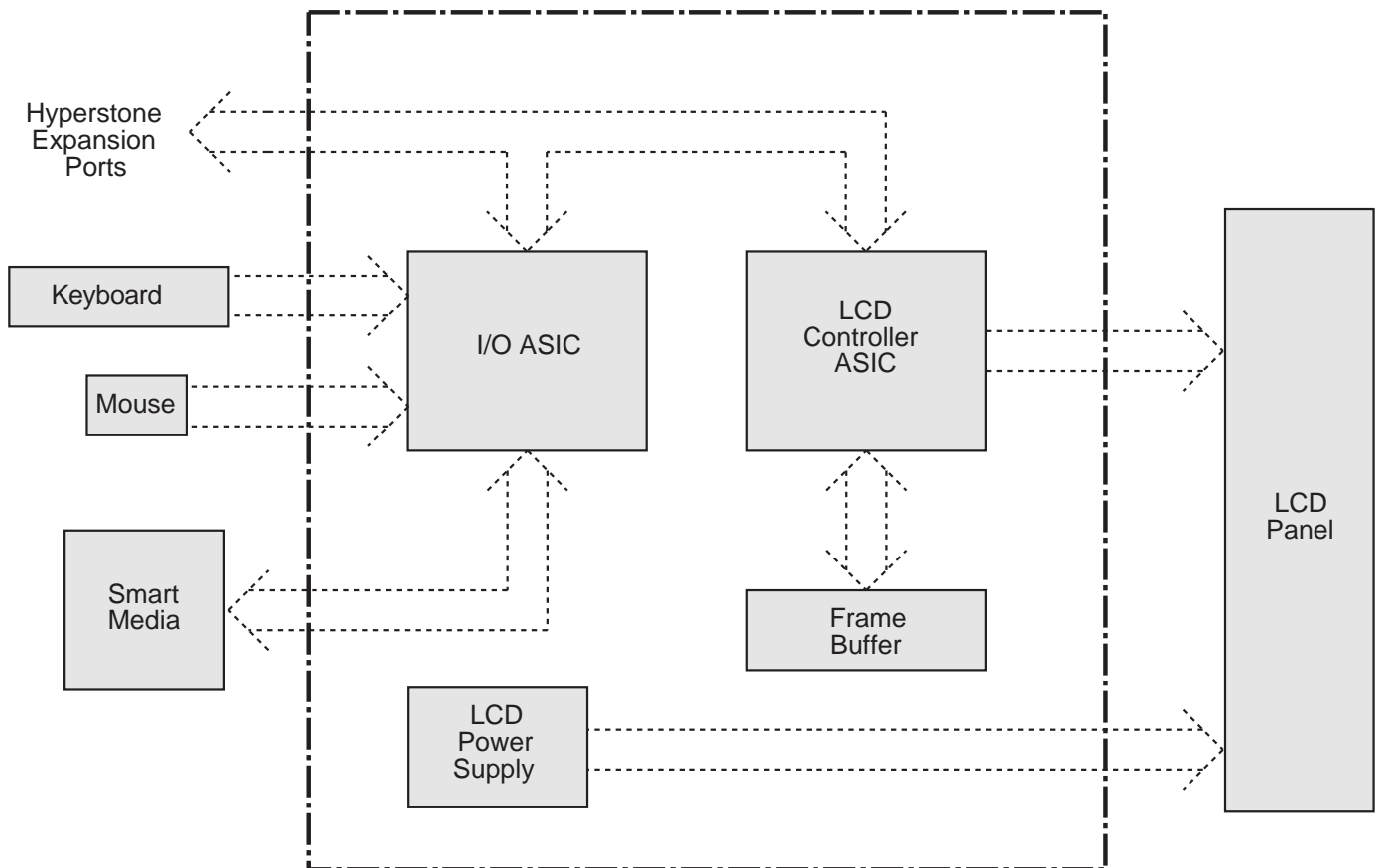


Hyperstone Development System User Interface Add On Board

Block Diagram



Board Layout

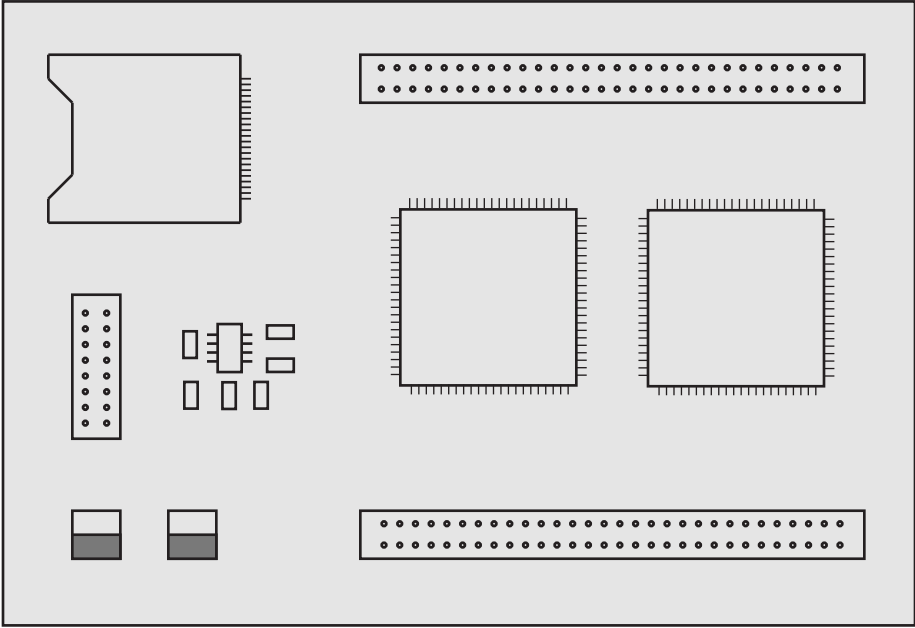


Figure 2.

Hyperstone Development System

User Interface Add On Board

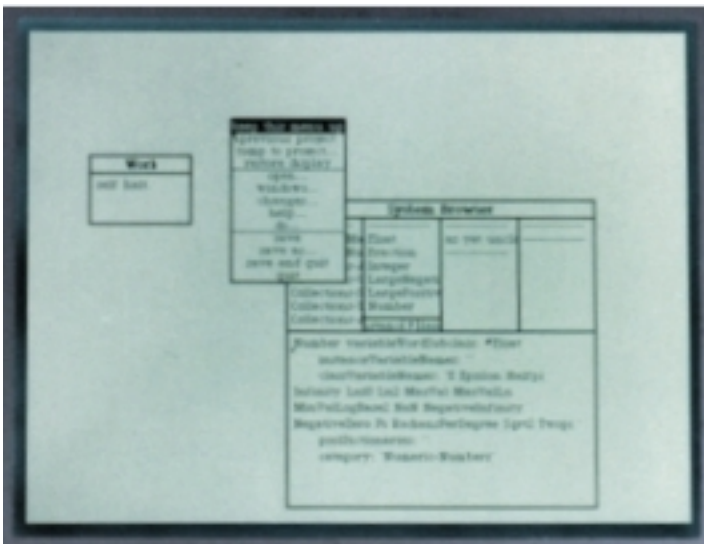
Sample LCD Panel Images



Hitachi DSTN 7.4" LCD. Our hardware generates Gray Scale on this Monochrome panel.



Photograph of a single scan EPSON EG9013 6.3" Backlit VGAPanel using SCT hardware. (panels available!)



Open Source Smalltalk Development Environment running on a Hyperstone processor with SCT Expansion Board.